

# Did You Know...



Endodontics  
of Malden

## Where Should Endo End?

### That Is The Question!

What you take out is more important than where your RC filling ends on the radiograph.

- It does not matter if the filling is 1 mm short or 1 mm out of the apex, as long as the canal system is well cleaned-out and the chamber is well-sealed to prevent coronal leakage.
- Determine where the anatomic apex is with the apex locator (Dry the canal for accurate readings). Take a radiograph *only when in doubt, not routinely.*
- The radiographic apex does not always coincide with the anatomic apex (Trust your apex locator) especially if:
  - The canal exits does not coincide with the radiographic apex.
  - There is apical resorption at the root apex, often seen in Chronic Periapical lesions.



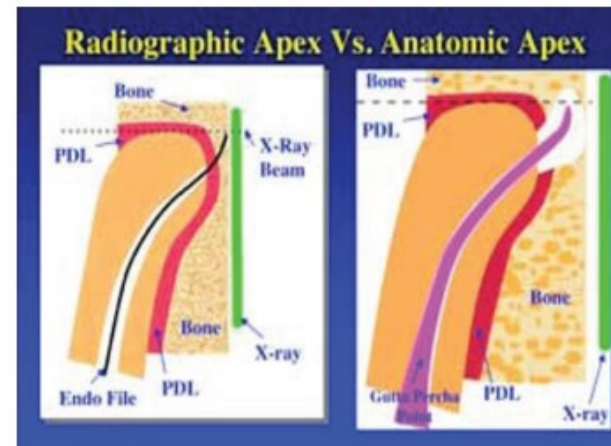
Dr. Jacinta Fernandes

The RC filling should end in the green zone, between apical constriction and the anatomic apex.

If it ends at the radiographic apex, very likely it is out of the anatomic apex.

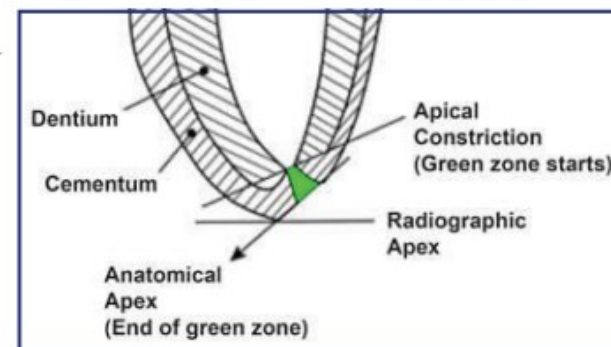
**Trust the APEX LOCATOR!**

**Anatomic Apex is where the canal exits the root and does not always coincide with the radiographic apex**



Courtesy: Dr. Allen Deutsch, Dentistry IQ

- 1. Radiographic apex**  
The highest point or tip of the root as seen on the x-ray.
- 2. Anatomic apex**  
The point where the neurovascular bundle enters the root apex.
- 3. Constriction**  
The narrowest point of the canal (usually located within 2 mm of the anatomic apex).



[contactus@maldenendo.com](mailto:contactus@maldenendo.com)



Dr. Priya Singh